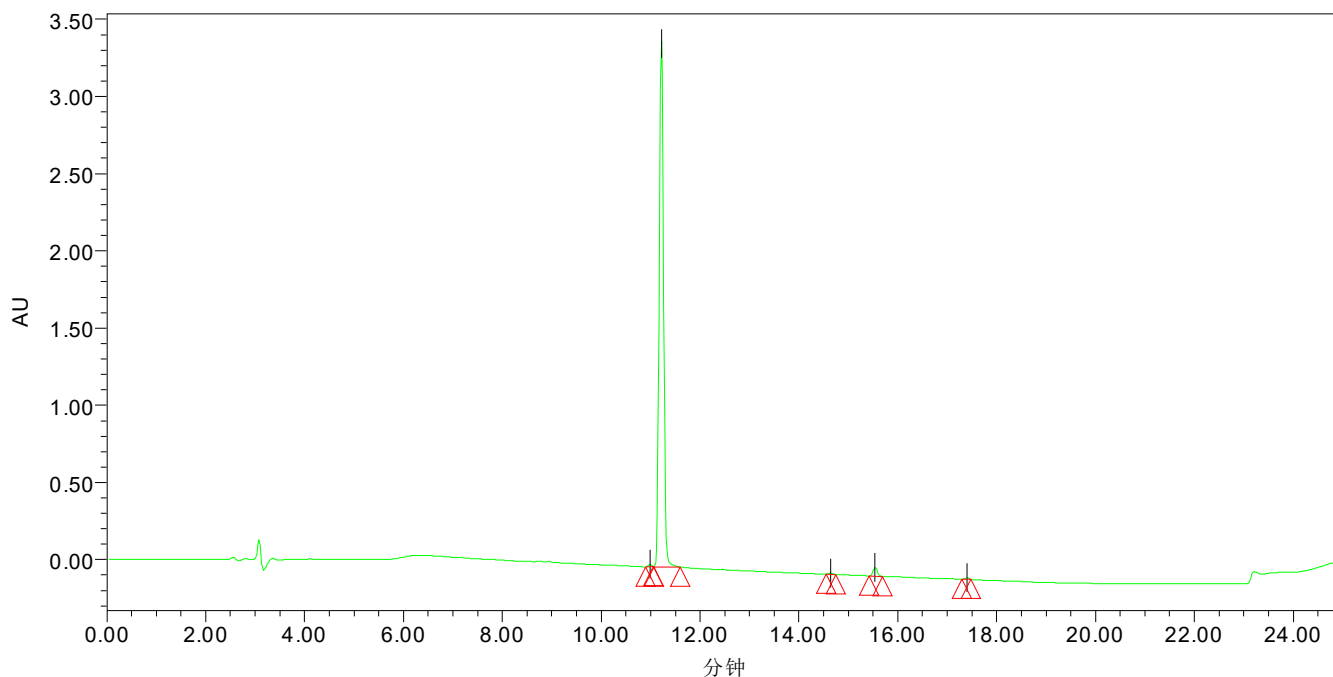
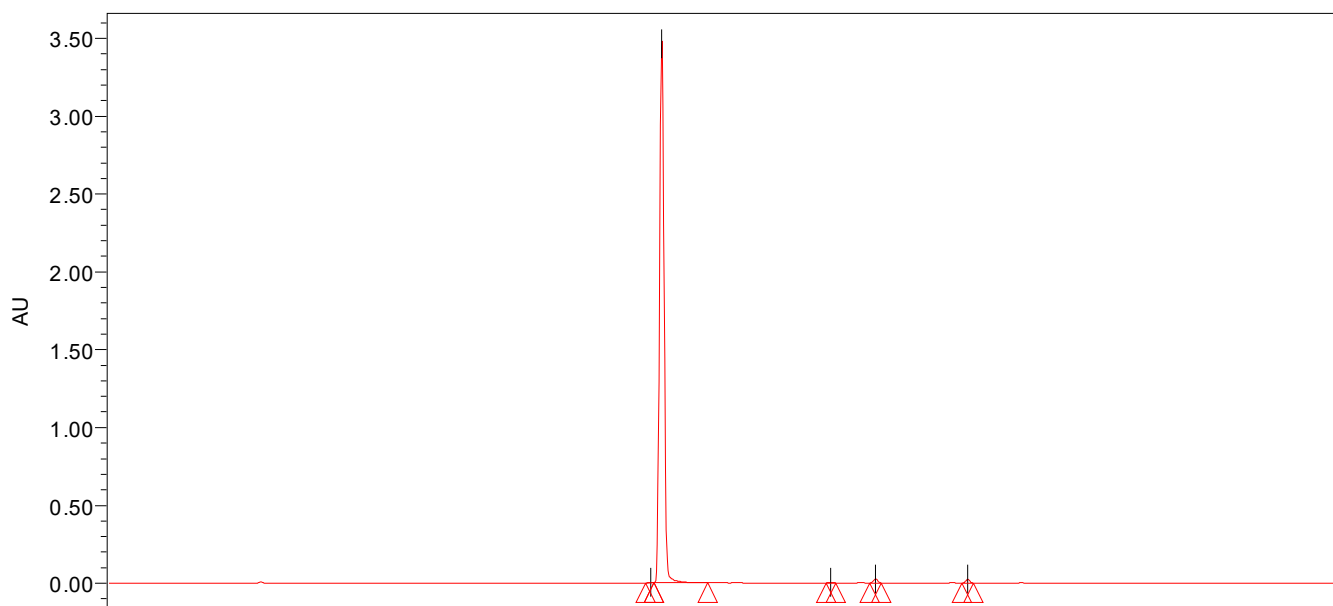


HPLC Report



— 样品名称 cucl关环-P; 样品瓶 8; 进样 1; 通道 W2489 ChA; 采集方法组 酸性25min01; 采集日期 2024/11/13 13:27:53 CST
— 样品名称 cucl关环-P; 样品瓶 8; 进样 1; 通道 W2489 ChB; 采集方法组 酸性25min01; 采集日期 2024/11/13 13:27:53 CST

	处理通道说明	保留时间 (分钟)	面积 (微伏*秒)	高度 (微伏)	% 面积
1	W2489 ChA 254nm	11.000	20728	4422	0.09
2	W2489 ChA 254nm	11.227	22768982	3502099	98.49
3	W2489 ChA 254nm	14.647	31665	5358	0.14
4	W2489 ChA 254nm	15.549	154794	26793	0.67
5	W2489 ChA 254nm	17.417	141801	25154	0.61
6	W2489 ChB 220nm	10.989	64319	14065	0.30
7	W2489 ChB 220nm	11.218	21196487	3390281	97.70
8	W2489 ChB 220nm	14.642	49339	8153	0.23
9	W2489 ChB 220nm	15.539	330515	55627	1.52
10	W2489 ChB 220nm	17.406	54520	10641	0.25